

## HİRA TESTING EQUIPMENT

### CEN REFERENCE SAND

STANDARDS: EN 196-1

CEN Standard sand is a natural sand, which is siliceous particularly its finest fractions.

It is clean, the particles are generally isometric and rounded in shape. It is dried, screened and prepared in a modern workshop which offers every guarantee in terms of quality and consistency.

The sand is packaged in bags each containing 1350±5 g.

Reference sand size is 0,08±2 mm.



HR-CE9285

#### Technical Specifications:

Product Code	Product Name	Dimensions (mm)	Weight (gr)
HR-CE9285	CEN Reference Sand	270x130x30	1350

#### Technical Specifications:

Square mesh Size (mm)	Cumulative Retained (%)
0,08	99 ± 1
0,16	87 ± 5
0,5	67 ± 5
1	33 ± 5
1,6	7 ± 5
2	0

### CEMENT MOULDS

STANDARDS: EN 196-1, ASTM C109, BS 4550

Used to produce the mortar specimens for compression and flexural tests.

Made from steel, stainless steel or hard plastic, it conforms to the above mentioned Specifications.

All dimensions and specifications comply with the related standards.

Feed Hopper is used for filling 40x40x160 mm cement moulds. Made from cast aluminum.

Cover plate and tamper for HR-CE9550 & HR-CE9555 Models should be ordered separately.

Short Spreader, Long Spreader and Straightedge for HR-CE900X Models should be ordered separately.

Steel Inserts and Reference Rods should be ordered separately.



HR-CE9000



HR-CE9300



HR-CE9500

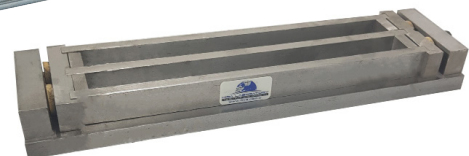


HR-CE9400

HR-CE9010/2



HR-CE9010/1



HR-CE9010

## Technical Specifications:

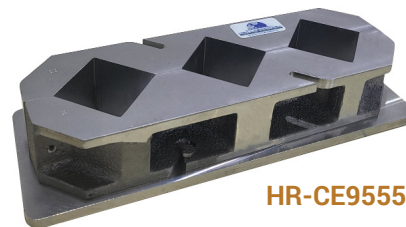
Product Code	Product Name	Standard	Ext. Dimensions (mm)	Weight (kg)
HR-CE9000	Three Gang Steel Mould, 40x40x160 mm	ASTM	300x190x70	11
HR-CE9001	Three Gang Steel Mould, 40.1x40x160 mm	EN	300x190x70	11
HR-CE9000/T	Three Gang Steel Mould, 40.1x40x160 mm, HV 400	EN	300x190x70	11
HR-CE9400	Three Gang Steel Cube Mould, 50x50x50 mm	ASTM	110x230x60	4,5
HR-CE9405	Three Gang Steel Cube Mould, 2"x2"x2"	ASTM	120x250x70	5
HR-CE9410	Three Gang Steel Cube Mould, 40x40x40 mm	---	100x220x50	3,5
HR-CE9015	Three Gang Steel Cube Mould, 25x25x285 mm	---	390x145x45	7
HR-CE9010	Two Gang Steel Prism Mould, 25x25x285 mm	ASTM	390x100x45	4,5
HR-CE9500	One Gang Steel Cube Mould, 70,7 mm	BS	100x125x90	3,5
HR-CE9550	Three Gang Stainless Steel Cube Mould, 50x50x50 mm	ASTM	110x230x60	9
HR-CE9555	Three Gang Stainless Steel Cube Mould, 2"x2"x2"	ASTM	120x250x70	10
HR-CE9560	One Gang Stainless Steel Cube Mould, 70,7 mm	BS	100x125x90	7
HR-CE9570	Three Gang Hard Plastic Cube Mould, 50x50x50 mm	ASTM	110x230x60	1
HR-CE9571	Three Gang Hard Plastic Cube Mould, 2"x2"x2"	ASTM	120x250x70	1
HR-CE9572	One Gang Hard Plastic Cube Mould, 70,7 mm	BS	100x125x90	0,8
HR-CE9573	Three Gang Hard Plastic Cube Mould, 40x40x40 mm	---	100x220x50	0,9
HR-CE9574	Three Gang Hard Plastic Cube Mould, 25x25x285 mm	---	390x100x45	1
HR-CE9575	Two Gang Hard Plastic Prism Mould, 25x25x285 mm	ASTM	390x145x45	0,8

## Spare Parts & Accessories:

Product Code	Product Name	Dimensions (mm)	Weight (kg)
HR-CE9000/1	Steel Insert for HR-CE9000. (Pack of 10)	---	---
HR-CE9000/2	Reference Rod, 160 mm	160	---
HR-CE9300	Feed Hopper for HR-CE9000	210x200x40	2
HR-CE9010/1	Steel Insert for HR-CE9010 (Pack of 10)	---	---
HR-CE9010/2	Reference Rod, 305 mm	305	---
HR-CE9000/5	Short Spreader for HR-CE900X Models	---	---
HR-CE9000/6	Long Spreader for HR-CE900X Models	---	---
HR-CE9000/7	Straightedge for HR-CE900X Models	---	---
HR-CE9550/1	Cover Plate for HR-CE9550 & HR-CE9555 Models	---	---
HR-CE9550/2	Tamper, for HR-CE9550 & HR-CE9555 Models	---	---



HR-CE9555 & HR-CE9550/1 & HR-CE9550/2



HR-CE9555



HR-CE9570